



STONECRETE

ŠTAMPANI DEKORATIVNI BETON

Bolje može samo priroda

Only Nature Could
Do It Better

Prednosti **STONECRETE DEKORATIVNOG BETONA**

- * Pruža veliku raznovrsnost boja i reljefa
- * Nijanse se ne menjaju vremenom
- * Nema pucanja usled mraza i promene klimatskih uslova
- * Ostaju nepromenjeni u rasponu od -40°C +80°C
- * Dugogodišnja garancija bez ikakvog održavanja
- * Nije klizav
- * Brzo se izradjuje
- * Podnosi najveće terete, pa i prelazak kamiona preko 40t

Advantages of **STONECRETE DECORATIVE CONCRETE**

- * A variety of colours and patterns provided
- * Shades of colours do not fade in time
- * No surface cracking due to frost and volatile weather conditions
- * The system remains stable at temperatures ranging from -40C to +80 C
- * Long-lasting quality is guaranteed, no maintenance is needed
- * Not slippery
- * Quick construction
- * Withstands heavy weights, even a lorry weighing over 40t



ŠTAMPANI DEKORATIVNI BETON





Skver - Dom vojske, Beograd

ULICE, TROTOARI, ŠETALIŠTA TRGOVI, PARKOVI

Trajnost i ekonomičnost

Racionalnost u izradi javnih površina znači spojiti ekonomičnost sa jedne strane i lepotu i trajnost sa druge. STONECRETE dekorativni beton omogućava da se ograničeni budžet mudro investira u pešačke zone, šetališta, trotoare i trgove trajne lepote.



Durable and economical

To be economical in arranging public places means to bring two poles together: rationality being the one, beauty and durability being the opposite. STONECRETE decorative concrete makes it feasible to invest tight budget resources wisely into pedestrian zones, walks, pavements and squares of eternal beauty.

STREETS, PAVEMENTS
WALKS, SQUARES, PARKS

STONECRETE



Studentski trg, Beograd

ŠETALIŠTA, TRGOVI, PARKOVI

Kvalitativnost

Sa kvalitetnim komponentama koje se koriste u izradi STONECRETE dekorativnog betona nema pukotina, nicanja biljaka i ružnih izbočina usled sleganja zemljišta. Kombinacijom izuzetnih tekstura sa prelepim bordurama svaka staza i trg čine nezamenjiv ukras svakog grada.



Quality

The use of quality components in the installment of STONECRETE decorative concrete prevents surface cracks, plants springing up and bumps occurring dueto the settlement of the ground. By combining exquisite patterns with beautiful borders each path and square will turn into an inimitable ornament of every town.

WALKS, SQUARES, PARKS





Ada Ciganlija, Beograd

Dekorativnost

Tehnologiju štampanog dekorativnog betona krasi dve osobine – kvalitet i dekorativnost. Štampani dekorativni beton može sa jedne strane dočarati kamen, kaldrmu, ciglu, mermer ili drvo, a sa druge, može ispoštovati tendencije savremenog arhitektonskog izraza jednostavnim, glatkim teksturama.

U Sjedinjenim Američkim Državama, Bliskom Istoku i zemljama Evropske Unije tehnologija štampanog betona široko je rasprostranjena između ostalog i zbog striktnih pravila zaštite životne sredine i kontrolisane upotrebe prirodnih resursa. Više nema potrebe koristiti prirodni kamen ili stene, budući da se one apsolutno mogu dočarati dekorativnim betonom. Ova tehnologija nam omogućava čuvanje prirode uz istovremeno ostajanje u njim kvalitetnim okvirima.



Decorativeness

The technology of imprinted decorative concrete boasts two features - high quality and decorativeness.

On the one hand imprinted decorative concrete can provide the look of natural stone, cobblestone, brick, marble or wood, but on the other hand it follows the latest trends in contemporary architecture with its simple and smooth textures.

In the USA, the Middle East and the EU member countries the technology of imprinted concrete is widely used. One of the reasons why this is so is the fact that strict rules of environmental protection and controlled utilization of natural resources must be observed. The need to use natural stone or rocks no longer exists inasmuch as they can be evoked with decorative concrete. The implementation of this technology does not violate the nature and at the same time it enables us to comply with its laws.





Skver Hajduk Veljkov venac, Beograd

ŠETALIŠTA, TRGOVI, PARKOVI

Brzina izrade

Štampani dekorativni beton se izrađuje deset puta brže od ostalih vrsta podnih sistema, tako da se radovi završavaju u rekordnom roku. Ova činjenica je neosporno važna ukoliko je reč o izgradnji u centralnim gradskim zonama ili glavnim saobraćajnicama, jer se smanjuju saobraćajni problemi.



Quick Construction

Imprinted decorative concrete flooring system is constructed ten times faster than other types of flooring systems, so that construction work finishes in a record-breaking time. Knowledge of this fact is of an invaluable importance if the construction is to be performed in downtown zones or traffic arteries since the risk of experiencing traffic congestion is minimized.

WALKS, SQUARES, PARKS



ŠETALIŠTA, TRGOVI, PARKOVI

Postojanost forme

Štampani dekorativni beton se izrađuje od armiranog betona koji se dodatno ojačava polipropilenskim vlaknima i učvršćivačima u boji.

Zbog kvaliteta strukturnih komponenti štampani dekorativni beton se ponaša kao jedinstvena celina – što znači: ne može doći do pucanja između fugni zbog preopterećenja, rastinje ne može da izbije na površinu, nisu moguća bilo kakva izdignuća i ulegnuća.

Ostaje nepromenjen i pod teretom kamiona od 40t.



Fontana i Trg, Apatin



Stability of Form

Imprinted decorative concrete is made of reinforced concrete which is further strengthened with polypropylene fibres and coloured hardeners. Owing to the high quality of structural components imprinted decorative concrete acts as a coherent whole. In other words, cracks between the parts will not occur in time due to overburdening, vegetation will not spring up and no potential upheavals and settlements of the ground will be visible. Imprinted decorative concrete flooring system remains unchanged even under the weight of a 40-ton lorry.





Garden centar, Beograd



Vaša oaza

Jedinstvena dekorativnost tekstura STONECRETE betona i široka paleta nijansi oplemenjuje opštu atmosferu svake bašte.

STONECRETE dekorativni beton odiše prirodnošću koja se stapa sa okolinom i sa zelenilom i cvećem čini prelepu oazu uživanja i opuštanja.



Your Oasis

Unique decorativeness of STONECRETE textures and a diversity of colour shades enriches the prevailing atmosphere of any garden.

STONECRETE decorative concrete emits naturalness that blends with landscape.

With greenness and flowers it creates the oasis of enjoyment and relaxation.

DVORIŠTA, TREMOVI, PREDULAZI

Colours

Regardless of whether you choose to have the exterior of contemporary architectural design, or you choose to revel in traditional architectural elements, the advantage of installing decorative concrete is a variety of colours and textures that makes your dreams come true.



YARDS, PORCHES, PATIOS



Kolorit

Bilo da odaberete da vaš eksterijer prati savremeni arhitektonski izraz ili uživate u tradicionalnim elementima, prednost dekorativnih betona je u tome što se zahvaljujući velikom koloritu i raznovrsnosti tekstura, vaše želje mogu u potpunosti ostvariti.



Koračajte jedinstvenom lepotom



Arcadia



Byzantine



Ladadika



Italian slate



Pilio



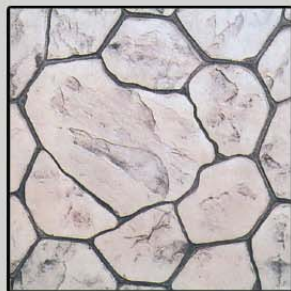
Crete



Nafplio



Herringbone brick



Evia



Nymfeo



Canvas

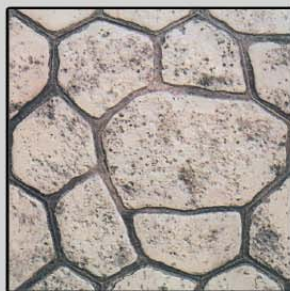
Walk down a unique beauty



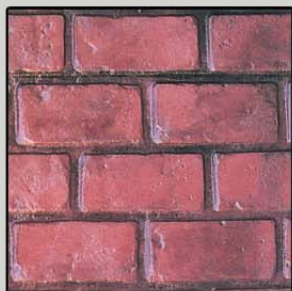
Acropolis



Epidaurus



Afitos



Brick



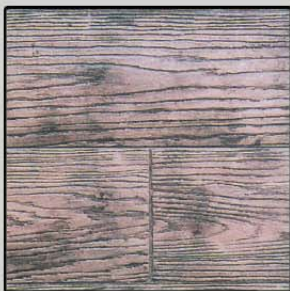
Chortiatis



Kalderimi



Olympia



Deck



Tile



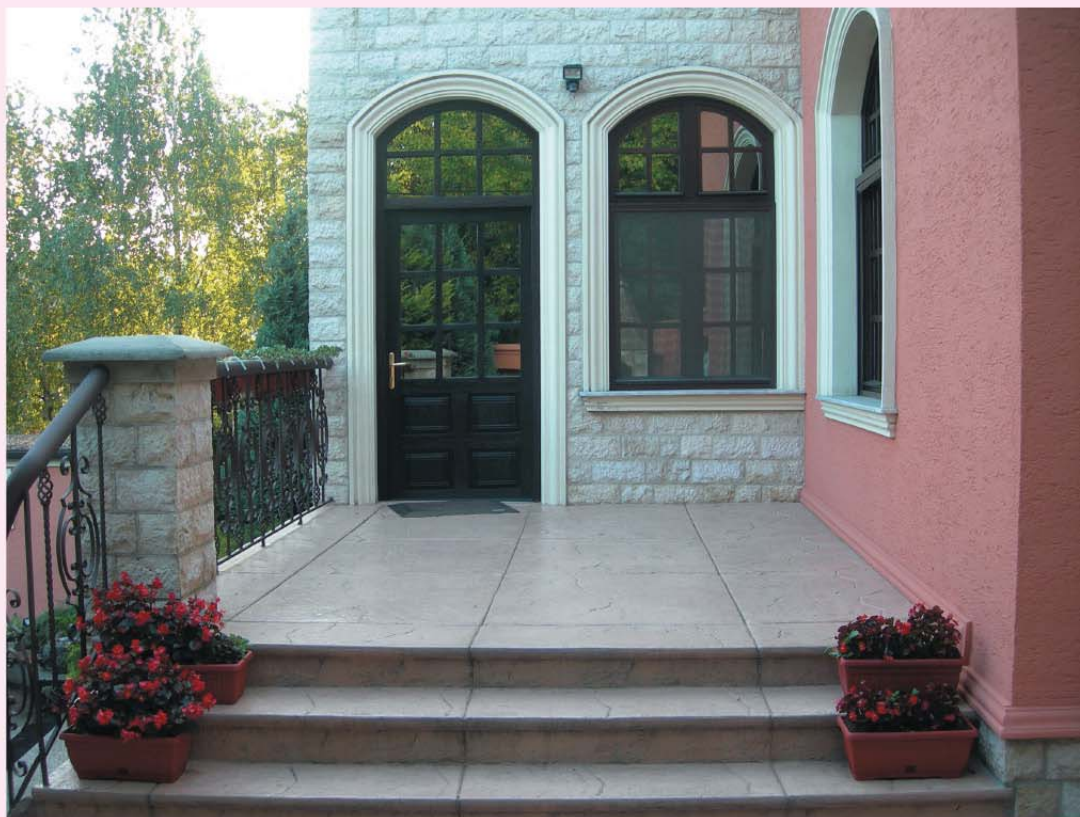
Spray Deck



Combed



DVORIŠTA, TREMOVI, PREDULAZI



YARDS, PORCHES, PATIOS

STONECRETE





Hardness

Teams of experts calculated that concrete MB 30 possesses a high hardness factor on the Moh's scale. The hardness factor of diamond is 10, of quartz 7, and the hardness factor of imprinted decorative concrete is 4. Since there are not many materials ranked on the hardness scale that could damage imprinted decorative concrete, this flooring system lasts longer than other flooring systems and cannot be damaged.



Tradicija

Prilikom restauracija tradicionalnih građevina izuzetne lepote, kao što su crkve, zadužbine, spomen muzeji vodi se računa o duhu vremena u okviru koga je to spomen obeležje nastalo.

Dekorativni beton je jedinstven sistem koji omogućava da se savremenom tehnologijom izrade dočara duh prošlih vremena korišćenjem kalupa tradicionalne i većinom stare vizantiske forme:

kaldrma, arcadia, ladadika i vizantija.



HOTELS



Tradition

When restoring traditional buildings of exquisite beauty such as churches or memorials, one has to take into account the spirit of the time to which those buildings date back. Decorative concrete is a unique system that makes it possible to evoke the spirit of the olden days with cutting-edge technology. The moulds applied are mostly of the traditional or Byzantine form: *Cobblestone, Arcadia, Ladadica and Byzantium.*



Očuvanje tradicije
Dekorisani beton u srcu Skadarlije



Senjak, Beograd

Harmonija sa prirodom

Hotelski kompleksi i ugostiteljski objekti stilizovanim eksterijerom plene svojom ekspresivnošću.

Negovane bašte, ukomponovane sa lepo dizajnim stazama i tremovima STONECRETE dekorativnog betona, doprinose opštem utisku lepote i urednosti. Bašte koje inženjeri hortikulture izrade u saradnji sa arhitektama eksterijera i stručnim kadrom STONECRETE ostaju zauvek u sećanju posetilaca svojom kvalitetom i nenametljivom harmonijom sa prirodom.



Living In Harmony With Nature

The stylized exteriors of hotels and catering establishments are enchantingly vivid.

Cultivated gardens, with high nicely designed paths and porches made of STONECRETE decorative concrete perfectly fit in, contribute to the overall impression of beauty and tidiness. Gardens that horticulture engineers design in collaboration with exterior designers and skilled craftsmen from the STONECRETE team will indelibly etch on the memory of any visitor with its quality and subtle harmony with nature.

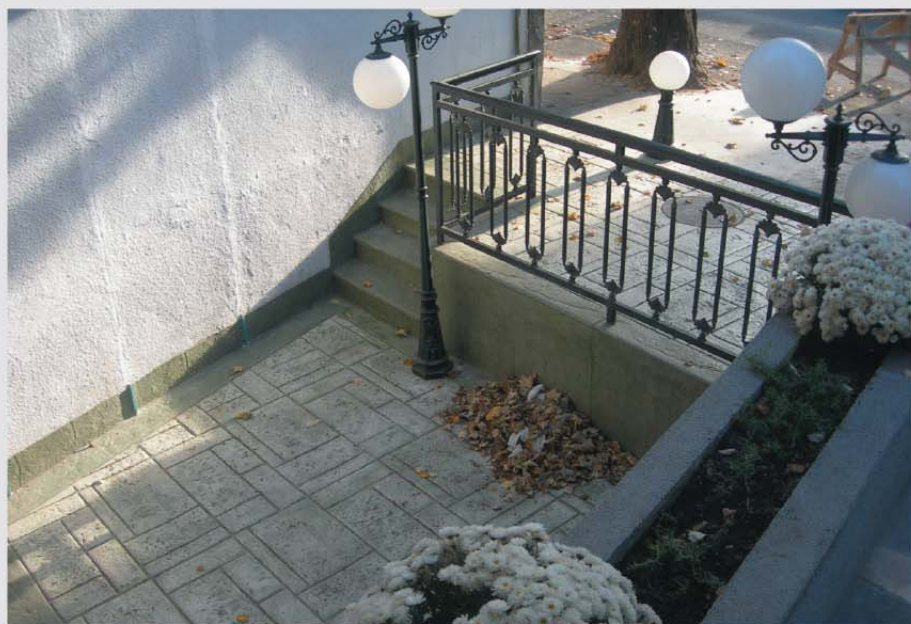
RESTORANI I KAFIĆI

Čvrstina

Stručni timovi su izračunali da beton MB 30 ima vrlo visok stepen tvrdoće po Moh skali.

Stepen tvrdoće dijamanta je 10, kvarca 7, a štampanog dekorativnog betona 4. Budući da ne postoji mnogo materijala na skali tvrdoće koji bi mogli da oštete štampani dekorativni beton, on je dugovečniji u odnosu na druge podne sisteme i ne može se oštetiti.





RESTAURANTS AND CAFFES





Jedan je put do cilja

U ekspanziji izgradnje poslovnih i tržnih centara dekorativni beton se kao jedinstveni sistem izdvojuje kvatitetom, brzinom izrade i mogućnošću ostvarenja najrazličitijih arhitektonskih ideja.

Kombinovanjem tekstura, bordura, odabirom željene boje iz široke palete ton karte, eksterijer može u potpunosti da bude nastavak započetog arhitektonskog izraza same zgrade.





Idea, Novi Beograd



Only one way leads to the end

With the number of business centres and shopping malls increasing by day, decorative concrete technology stands out owing to its quality, possibility of quick installation and guaranteed realization of innumerable ideas.

By combining textures and borders and selecting the desired colour tone catalogue, the exterior can fully be the final touch given to the architecture of the building.



SWIMMING POOLS



Neklizavost

Štampani dekorativni beton ima nizak koeficijent trenja zbog čvrstine, što omogućava da ostane neklizav tokom vremena. Garantuje se sigurnost i do nagiba od 17%.

No Slipping

Owing to its hardness imprinted decorative concrete has a low friction factor, which is why it will not become slippery in time. Safety is guaranteed even when the incline is as high as 17%.





ŠTAMPANI DEKORATIVNI BETON

STONECRETE d.o.o.

11000 Beograd,
Narodnog Fronta 86A
Tel: +381 11 347 0187, 347 6413,
Fax: + 381 11/ 288 2948

Magacin:

Tel: +381 64 641 5418,
Narodnog Fronta 86A
11000 Beograd

STONECRETE maloprodaja

Dimitrija Tucovića 28b
11120 Beograd
Tel: +381 11 3837 257; 3837 258

www.stonecrete.rs

www.stampanibeton.rs

e-mail: office@stonecrete.rs



STONECRETE - VAŠA GARANCIJA ZA KVALITET